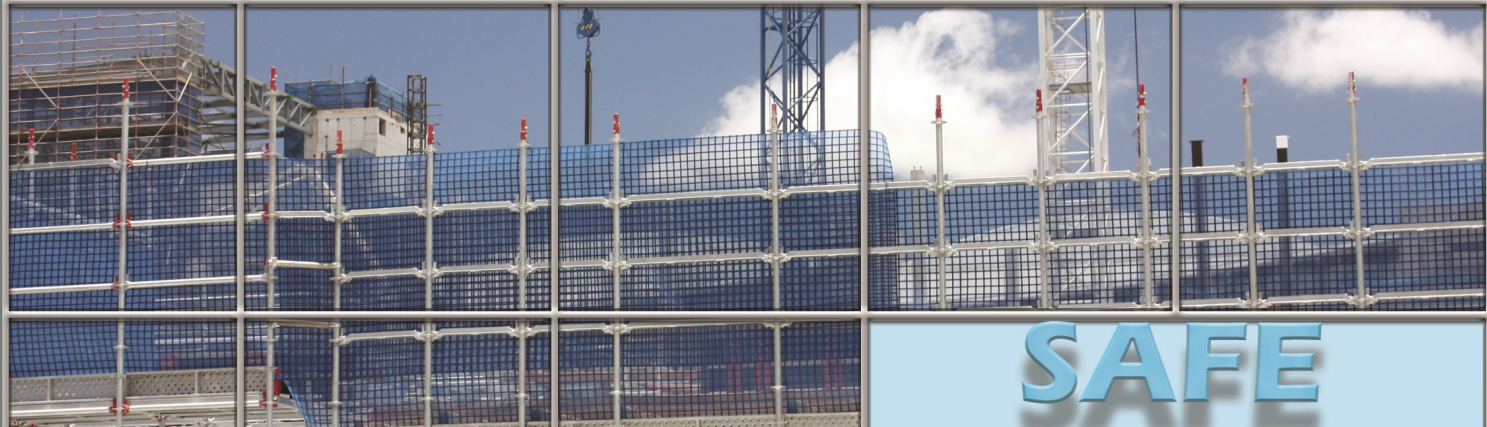


[Dynaton.co.nz](http://Dynaton.co.nz)

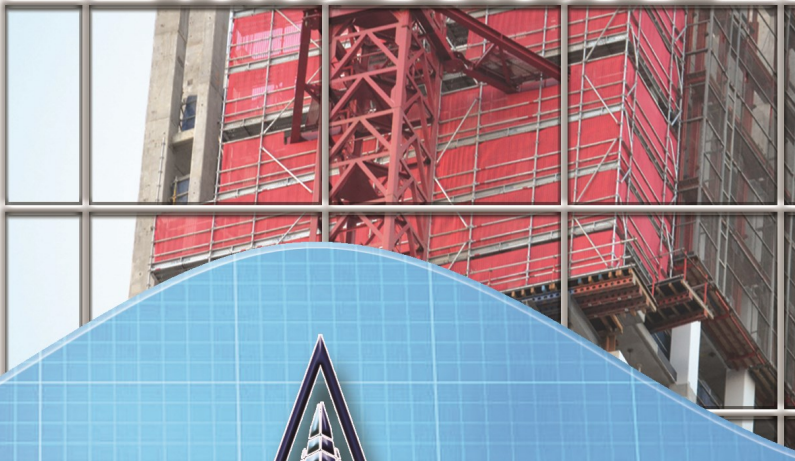


**SAFE**

**Efficient**



**Innovative**



**DYNATON**  
Limited

**Scaffolding**



# SCAFFOLDING

<b><u>Scaffolding Accessories</u></b>	<b>1</b>
<b><u>Scaffolding Accessories</u></b>	<b>2</b>
<b><u>Collars &amp; Corner Fillers</u></b>	<b>3</b>
<b><u>Brace/Dynamesh/Hopup Brackets</u></b>	<b>4</b>
<b><u>Fittings</u></b>	<b>5</b>
<b><u>Jacks</u></b>	<b>6</b>
<b><u>Steel Boards &amp; Transoms</u></b>	<b>7</b>
<b><u>Stairs</u></b>	<b>8</b>
<b><u>Standards</u></b>	<b>9</b>

## DYNATON LIMITED

POST: PO BOX 14463 PANMURE, AUCKLAND 1741

ADDRESS: 163 PILKINGTON ROAD, MT WELLINGTON

PANMURE 1060, NEWZEALAND

TEL: 09 527 7599

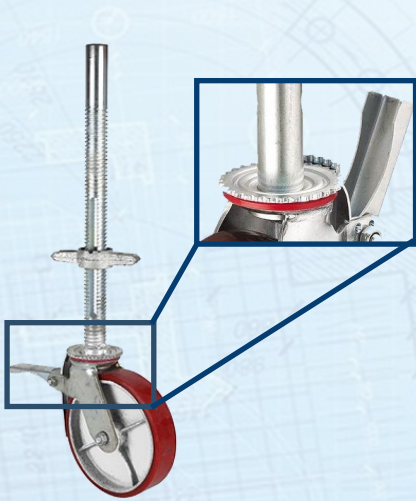
INTERNATIONAL: +64 9 527 7599

FAX:



# Sacffolding Accessories

## **Castor Wheel Swivel**



**With Jack and slot so the jack can be fixed to the scaffold and can still be adjusted.**

**Heavy duty swivel castor wheel 200mm diameter wheel with locking brake, solid screw with slot for full adjustment.**

**Finish: Hot dipped galvanised.**

**Part No. FCA002**

## **Pallet Open**



**890 x 890 Galva-  
nised  
Part No. PAOR0001**

## **Pallet Open Extra Large**



**1228x1030x1125mm  
Hot Dipped Galvanised  
Part No. PAOR0002**

## **Pallet Mesh**



**890 x 890 Galvanised  
Part No. PAMR0001**



# Scaffolding Accessories

**Kwik Az Clips**



**Part No. KWK-001**

**KwikAZ Driver**



**Part No. KWK-002**

**Toe Board Clip**



**Part No. RTB0000**

**Ladder Access Hatch suits 1800bay**



**Part No. LAHK1800**

**Ladder Access Hatch suits 2400bay**



**Part No. LAHK2400**

**Handrail Post**



**300mm Bolt Down  
Part No. HP0300**



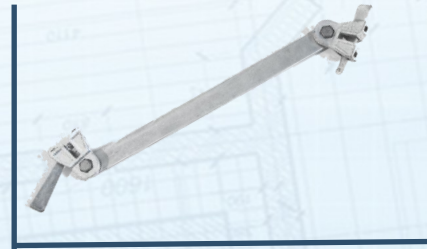
# Collars & Corner Fillers

## **Starter Collar**



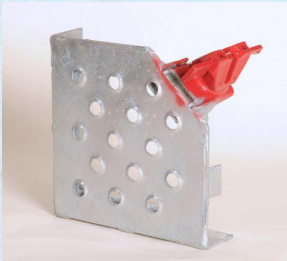
**Part No. RSC0000**

## **Starter Collar Joiner**

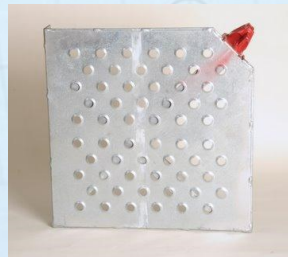


**Part No. RSCJ000**

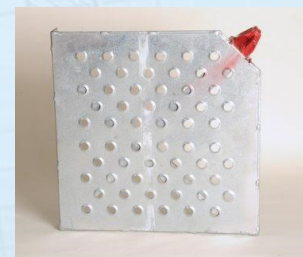
## **Corner Fillers**



**1 x 1 Board ICF  
Part No. RCB0001**



**2 x 2 Board ICF  
Part No. RCB0002**



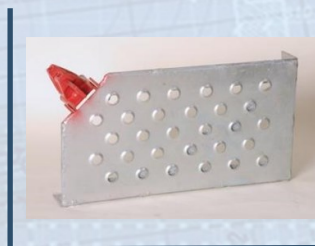
**3 x 3 Board ICF  
Part No. RCB0003**



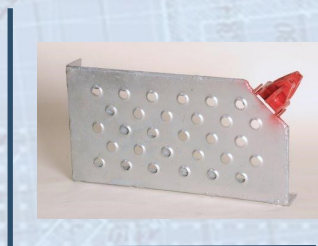
**1 x 2 Board ICF Left  
Part No. RCB1200**



**2 X 1 Board ICF Right  
Part No. RCB2100**



**2 x 3 Board ICF Left  
Part No. RCB2300**



**3 x 2 Board ICF Right  
Part No. RCB3200**



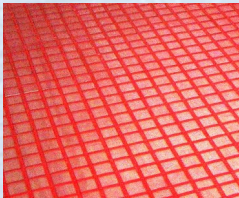
# Diagonal Braces

## Dynamesh & Hop Up Bracket



### Diagonal Brace

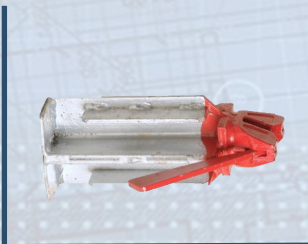
Product name	Measurement	Product code
1700 Diagonal Brace	0.762X1.0m/ 1170mm Length	RBR1700
1828 Diagonal Brace	1.828x1.0M/ 1949mm Length	RBR1828
2100 Diagonal Brace	1.268X2.0m/ 2289mm Length	RBR2100
2700 Diagonal Brace	1.828x2.0m/ 2607mm Length	RBR2700
3200 Diagonal Brace	2.438x2.0m/ 3035mm Length	RBR3200



**DYNAMESH®** is a uniquely designed and patented containment system for use in the Construction and Mining Industries. DynaMesh® incorporates features that make it one of the best and versatile containment mesh products on the Market. This product has been extensively tested against similar products in the market today. DynaMesh® has shown it is consistently 50% stronger and 30% lighter than others.

Product name	Measurement (LxH)	Part No. code
Blue	10m x 1.85m / 15kg	DM-0010-185BLU
Red	10m x 1.85m / 15kg	DM-0010-185RED
Green	10m x 1.85m / 15g	DM-0010-185GRN
Wild Blue	10m x 1.85m / 15g	DM-0010-185WB

### 1 Board Hop Up Bracket



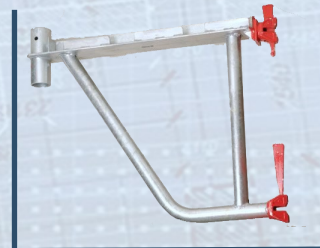
**Part No.**  
**RHU0001**

### 2 Board Hop Up Bracket



**Part No.**  
**RHU0002**

### 3 Board Hop Up Bracket



**Part No.**  
**RHU0003**



# Fitting

**Right Angle  
Coupler 90**



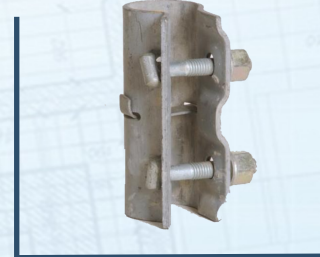
**Part No. F90RAC**

**Right Angle  
Coupler Reducer**



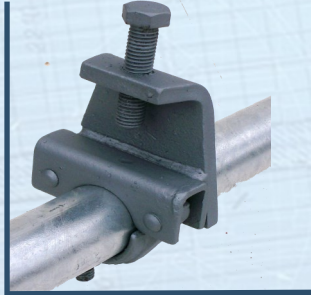
**Part No. F90RAC-R**

**End To End  
Sleeve Type**



**Part No. FEX0000**

**Girder Coupler  
(Beam Clamp)**



**Part No. FGC0000**

**Putlog Clip**



**Part No. FPC0000**

**Putlog Clip  
Hook**



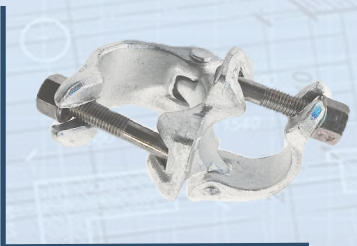
**Part No. FPC0001**

**Swivel Coupler**



**60mm x 48.3mm  
Part No. FSWIV**

**Swivel Coupler Re-  
ducer**



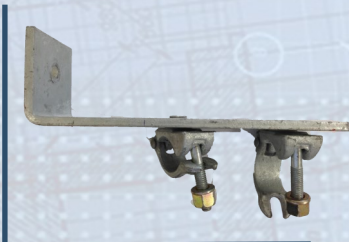
**60mm x 48.3mm  
Part No. FSWIV-R**

**Twin Wedge  
Coupler**



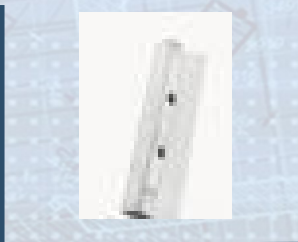
**Part No. FTW0000**

**Wall Tie Bracket**



**Part No. WTB0000**

**Dynaton Scaf-  
fold Spigot**



**Part No. FSS0000**



# Jacks

## U head Jack



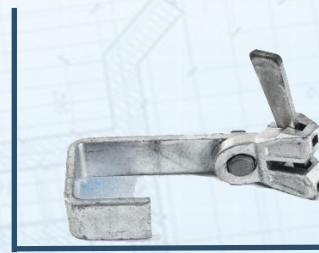
**37mm Solid  
Part No. UJ0000**

## Base Jack Flat



**37mm Solid  
Part No. BJ0000**

## Base Jack Holder



**80x160mm  
Part No. BJH0000**

## Base Swivel Jack



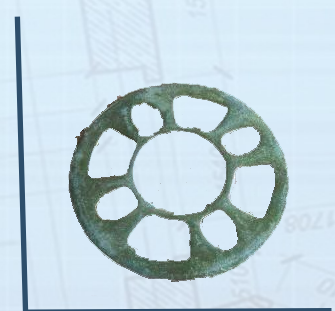
**37mm  
Part No. UJ0000**

## Adjustable Rosette



**Part NO. RAR0000**

## Standard Rosette



**Part No. ROS0000**

## Ledgers



Product name	Length	Product code
300mm Dog Bone	300mm	RLD0300
0.762m Leger	0.762m	RLD0700
1.268m Leger	1.268m	RLD1200
1.828m Ledger	1.828m	RLD1800
2.438m Ledger	2.438m	RLD2400



# Steel Boards & Transoms

## Steel Boards



Product name	Length x Width x Height / Weight	Product code
Steel Board 0.7m	0.76m x 0.225m x 0.065m / 4.6 kg	SB0700
Steel Board 1.2m	1.25m x 0.225m x 0.065m / 7.6 kg	SB1200
Steel Board 1.8m	1.81m x 0.225m x 0.065m / 10.9 kg	SB1800
Steel Board 2.4m	2.42m x 0.225m x 0.065m / 14.5 kg	SB2400
Steel Infill Board 1.2m	1.2m x 0.079m x 0.063m / 4.9 kg	RIB1200
Steel Infill Board 1.8m	1.81m x 0.079m x 0.063m / 6.95 kg	RIB1800
Steel Infill Board 2.4m	2.42m x 0.079m x 0.063m / 9.2 kg	RIB2400

## Transoms



Product name	Length x Width x Height / Weight	Product code
Transom 0.5m	0.537m x 0.1m x 0.05m / 4.2kg	RTR0500
Transom 0.7m	0.762m x 0.1m x 0.05m / 6.3 kg	RTR0700
Transom 1.2m	1.268m x 0.1m x 0.05m / 10.4 kg	RTR1200
Transom 1.8m	1.828m x 0.1m x 0.05m / 18.5 kg	RTR1800
Transom 2.4m	2.438m x 0.1m x 0.05m / 25 kg	RTR2400



# Stairs

**1.5m Access Stair**



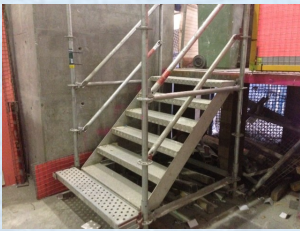
**Part No. F90RAC**

**Mid Handrail**



**Part No. RMR0000**

**Stretcher  
Stair 1.0m**



**Part No. RSS0000**

**2.0m Access  
Stair (Right)**



**Part No. RSS0001**

**2.0m Access  
Stair (Left)**



**Part No. RSS0002**

**Scaffold Tube**



**Part No. TU6500**

**Full Scaffold  
Tool Kit**



**Part No. STBkit-001**



# Standards

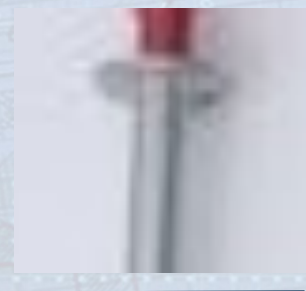


Product name	Length x Width x Height / Weight	Product code
Exit Standard 1.0m	1.0m x 0.048m x 0.048m / 59 kg	RES1000
Exit Standard 2.0m	2.0m x 0.048m x 0.048m / 11.1 kg	RES2000



Product name	Length x Width x Height / Weight	Product code
Standard 0.5m	0.5m x 0.048m x 0.048m / 3.3 kg	RRT0500
Standard 1.0m	1.0m x 0.048m x 0.048m / 6.1 kg	RSD1000
Standard 1.5m	1.5m x 0.048m x 0.048m / 8.8 kg	RSD1500
Standard 2.0m	2.0m x 0.048m x 0.048m / 11.6 kg	RSD2000
Standard 2.5m	2.5m x 0.048m x 0.048m / 14.3 kg	RSD2500
Standard 3.0m	3.0m x 0.048m x 0.048m / 17.5 kg	RSD3000

## **Stage Standard**



**Part No. RSDS005**



## WHY CHOOSE DYNATON?



### SAFE AND RELIABLE

Using high quality galvanised steel Dynaton is dependable with strong, easily interlocking parts. Individual parts are low weight for easier handling. There are no projections that can be accidentally damaged or detached. Parts are tried and proven.



### COST EFFECTIVE

Dynaton is economic to use whilst offering enhanced function and durability. We will provide a prompt quote for either buy or hire.



### SIMPLE, QUICK AND EASY

Bolt free technology allows quick, easy assembly and dismantling. There are no loose parts and very little material is required.

### COMPATIBLE

Dynaton scaffolding is suitable to be used with other steel boards and systems commonly used in construction.

### MAINTENANCE FREE

Galvanised steel requires no maintenance, is corrosion resistant and always ready to use.

### VERSATILE

Dynaton is designed for safe, simple use in a broad spectrum of applications such as in construction, civil, industrial, mining, and commercial eg. in scaffolding, formwork, and bridging.

### UNIQUELY ENGINEERED

Dynaton is uniquely engineered. The self-securing assembly system enables cantilevering at height. The braces are load bearing, eliminating the need for extra bracing or other components.

### VISUALLY PLEASING

As with all projects we imagine aesthetics are important to you and your clients. With a high quality galvanised steel finish, Dynaton is guaranteed to look good!